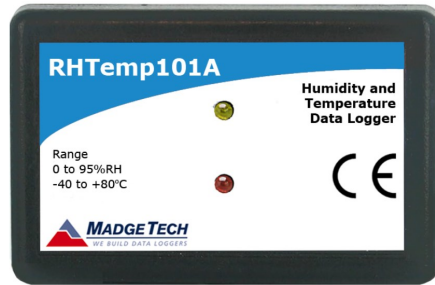


# RHTEMP101A

## HUMIDITY AND TEMPERATURE DATA LOGGER



The RHTemp101A is one of MadgeTech's newest data loggers. It is part of a new series of low cost, state-of-the-art data logging devices. MadgeTech has taken the lead in offering the most advanced, low cost, battery powered data loggers in the world today.

### Features

- 10 Year Battery Life
- 1 Second Reading Rate
- Multiple Start/Stop Function
- Ultra High Speed Download
- 1,000,000 Readings Per Channel, Storage Capacity
- Memory Wrap
- Precision RTD Sensing Element
- Battery Life Indicator
- Optional Password Protection
- Programmable High and Low Alarms
- N.I.S.T. Traceable
- Field Upgradeable

### Benefits

- Simple Setup and Installation
- Minimal Long-Term Maintenance
- Long-Term Field Deployment

### Applications

- Implement HACCP Programs
- HVAC
- Warehouse Monitoring
- Museum Monitoring
- Medical/Pharmaceutical

The RHTemp101A offers a 10 year battery life, a 1 second reading rate, a multiple start/stop function, ultra-high speed download capability, 1,000,000 readings per channel storage capacity, optional memory wrap, precision RTD sensing element, battery life indicator, optional password protection, programmable high-low humidity alarms and more. The RHTemp101A is priced at \$149 each and can be delivered from stock now. Our research has shown that the RHTemp101A is second to no other data logger when it comes to price and performance.

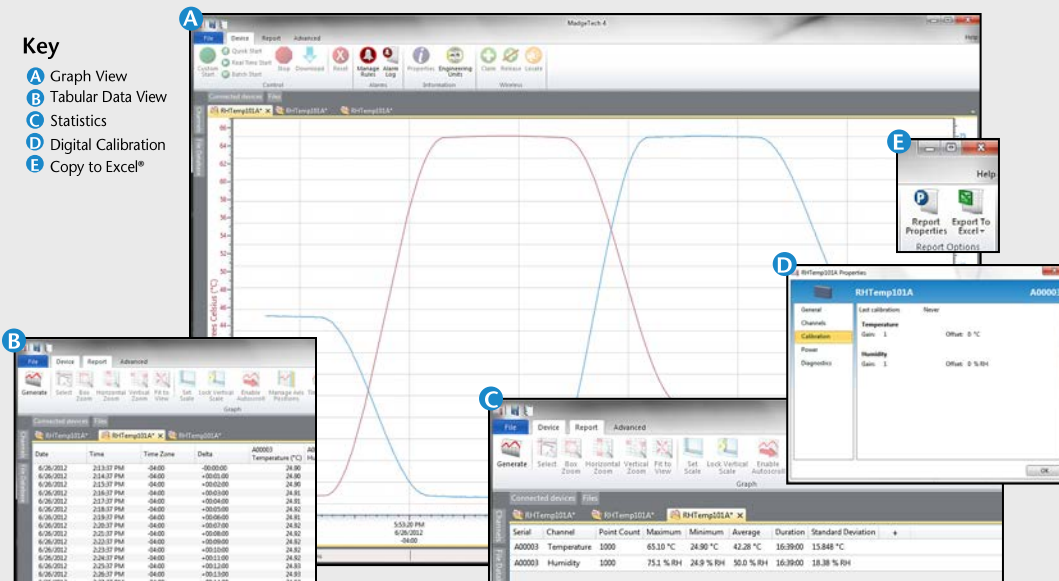
Using the MadgeTech Software, starting, stopping and downloading from the RHTemp101A is simple and easy. Graphical, tabular and summary data is provided for analysis and data can be viewed in °C, °F, K, °R, %RH, mg/ml water vapor concentration and dew point. The data can also be automatically exported to Excel® for further calculations.

As the leader in low power data logger technology, MadgeTech continuously improves its products and develops solutions to meet ever-changing challenges. The RHTemp101A was designed with our customers in mind. MadgeTech offers free firmware upgrades for the life of the product so that data loggers already deployed in the field can grow with new technological developments. Units do not need to be returned to the factory for upgrades. The user can do this automatically from any PC.

## MADGETECH DATA LOGGER SOFTWARE

### Key

- A** Graph View
- B** Tabular Data View
- C** Statistics
- D** Digital Calibration
- E** Copy to Excel®



### Software Features:

- Multiple graph overlay
- Statistics
- Digital calibration
- Zoom in/ zoom out
- Lethality equations (F<sub>0</sub>, PU)
- Mean Kinetic Temperature
- Full time zone support
- Data annotation
- Min./Max./Average lines
- Data table view
- Automatic report generation
- Summary view
- Multilingual

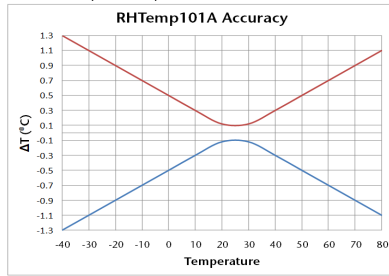
# RHTEMP101A SPECIFICATIONS\*

**Temperature Sensor:** Precision RTD Element

**Temperature Range:** -40°C to +80°C (-40°F to +176°F)

**Temperature Resolution:** 0.01°C (0.018°F)

**Calibrated Accuracy:** ±0.5°C (±0.9°F)



**Humidity Sensor:** Internal Semiconductor

**Humidity Range:** 0 to 95%RH

**Humidity Resolution:** 0.1%RH

**Calibrated Accuracy:** ±3.0%RH (±2%RH typical at 25°C/77°F)

**Specified Accuracy Range:** +10°C to +40°C (50°F to 104°F); 10%RH to 80%RH

**Reading Rate:** 1 reading every second to 1 reading every 24 hours

**Memory:** 1,000,000 readings per channel; software configurable memory wrap  
500,000 readings in multiple start/stop mode

**Wrap Around:** Yes

**Start Modes:**

- Immediate start
- Delay start up to 18 months
- Multiple pushbutton start/stop

**Multiple Start/Stop Mode:** Start and stop the device multiple times without having to download data or communicate with a PC

**Stop Modes:**

- Manual through software
- Timed (specific date and time)

**Multiple Start/Stop Mode** To start the device:

**Activation:** Press and hold the pushbutton for 5 seconds, the green LED will flash during this time. The device has started logging.

To stop the device:

Press and hold the pushbutton for 5 seconds, the red LED will flash during this time. The device has stopped logging.

**Real Time Recording:** The device may be used with PC to monitor and record data in real-time

**Alarm:** Programmable high and low limits; alarm is activated when humidity reaches or exceeds set limits

**LED Functionality:** Green LED blinks:  
10 second rate to indicate logging  
15 second rate to indicate delay start mode

Red LED blinks:  
10 second rate to indicate low battery and/or full memory  
1 second rate to indicate an alarm condition

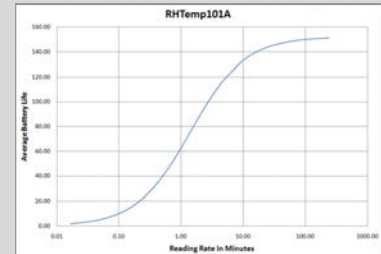
**Password Protection:** An optional password may be programmed into the device to restrict access to configuration options. Data may be read out without the password.

**Calibration:** Digital calibration through software

**Calibration Date:** Automatically recorded within device

**Battery Type:** 3.6V lithium battery included; user replaceable

**Battery Life:** 10 years typical at a 15 minute reading rate



Graph display of the device recording in a 25° C environment.

**Data Format:** Date and time stamped °C, °F, K, °R; %RH, mg/ml water vapor concentration, dew point

**Time Accuracy:** ±1 minute/month (at 20°C/68°F, stand alone data logging)

**Computer Interface:** USB (interface cable required); 115,200 baud

**Software:** Version 2.06.3 or higher XP SP3/Vista/Windows 7

**Operating** -40°C to +80°C(-40°F to +176°F),  
**Environment:** 0%RH to 95%RH non-condensing

**Dimensions:** 1.4" x 2.2" x 0.6" (36mm x 56mm x 16mm)

**Weight:** 0.9 oz (24 g)

**Materials:** ABS Plastic

**Approvals:** CE

**BATTERY WARNING:** WARNING: FIRE, EXPLOSION, AND SEVERE BURN HAZARD. DO NOT SHORT CIRCUIT, CHARGE, FORCE OVER DISCHARGE, DISASSEMBLE, CRUSH, PENETRATE OR INCINERATE. BATTERY MAY LEAK OR EXPLODE IF HEATED ABOVE 80°C (176°F).

## ORDERING INFORMATION

MODEL	DESCRIPTION
RHTEMP101A	Humidity and Temperature Data Logger
IFC200	Software, manual and USB interface cable
N.I.S.T.	N.I.S.T. Calibration Certificate
LTC-7PN	Replacement battery for RHTemp101A

ASK ABOUT  
OUR OTHER  
DATA  
LOGGERS

Temperature  
Humidity  
Pressure  
pH  
Level  
Shock  
LCD Display  
Pulse/Event/State  
Current  
Voltage  
Wireless  
Intrinsically Safe  
Spectral Vibration

Contact:  
Industrial Process Measurement, Inc.  
3910 Park Avenue, Unit 7  
Edison, NJ 08820  
732-632-6400  
support@instrumentation2000.com  
http://www.instrumentation2000.com

