

RFRHTEMP2000A

WIRELESS TEMPERATURE AND HUMIDITY DATA LOGGER



Features

- Wireless Two-Way Communication
- View Data in Real-Time
- 3 Year Battery Life
- Battery Life Indicator
- NIST Traceable
- Field Upgradeable
- Audible and LED Alarm Indicators
- Cumulative Alarm Delay

The RFRHTemp2000A is a wireless temperature and humidity data logger with digital display. This device is calibrated traceable to N.I.S.T. and is available with a Calibration Certificate. The RFRHTemp2000A is ideal for both industrial or laboratory applications including supply chain storage facilities, incubator monitoring and HVAC studies. Designed with external humidity and RTD based temperature sensors, the device provides a fast response time for both parameters.



Benefits

- Fast Installation
- Minimal Long-Term Maintenance
- Full Communication From One PC
- Time and Money Saving with Battery Management
- Reduction of False Alarms

For customer convenience, functions include starting, stopping and downloading from the device wirelessly using the RFC1000 wireless transceiver. This allows customers to quickly access data and spend less time maintaining the device. Data can be provided in real time back to a central PC, or the device may be downloaded at periodic intervals. The digital display provides the current reading for both the humidity and temperature channels with minimum, maximum and average statistics accessible for a quick snapshot of the logged data.

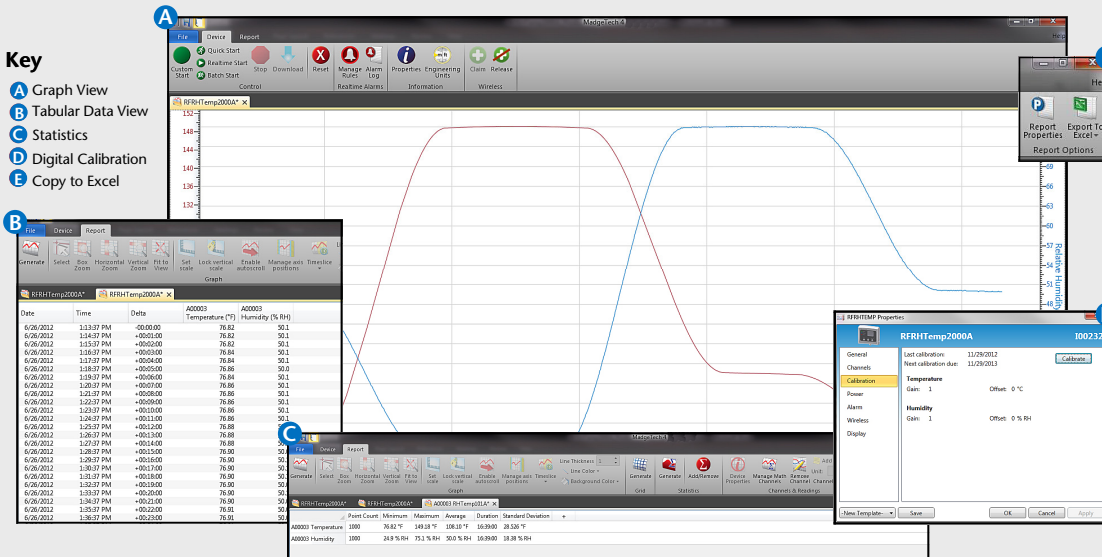
Applications

- Clean Rooms
- Laboratories and Hospitals
- Medical and Pharmaceutical
- Warehouse mapping
- Storage of Perishable Goods
- Chemical Storage
- Incubator Monitoring
- Greenhouse Monitoring
- HVAC
- Bakery / Cereal Production

The RFRHTemp2000A features user programmable alarm settings for both temperature and humidity parameters. An audible buzzer and LED alarm indicator notifies users when the temperature or humidity is above or below the threshold set in the alarm. Email and text alarms can also be configured and sent from within the software, allowing users to be notified almost anywhere.

The RFRHTemp2000A can be used as a single, wireless data logging system, or it can be expanded to a large scale system, which can include hundreds of data loggers measuring a number of areas (additional MadgeTech wireless data loggers and transceivers may be required). The RFRHTemp2000A utilizes the new MadgeTech Software, version 4.1. MadgeTech Data Logger Software is a powerful, analytic tool. Data can be viewed in graphical or tabular formats and summary and statistics views are available for further analysis.

MADGETECH DATA LOGGER SOFTWARE



- ### Software Features:
- Multiple graph overlay
 - Statistics
 - Digital calibration
 - Zoom in/ zoom out
 - Lethality equations (F₀, PU)
 - Mean Kinetic Temperature
 - Full time zone support
 - Data annotation
 - Min./Max./Average lines
 - Data table view
 - Automatic report generation
 - Summary view

FRHTEMP2000A SPECIFICATIONS*

Temperature

Internal Channel Temperature Range:	-20°C to +60°C (-4°F to +140°F)
Temperature Resolution:	0.01°C (0.02°F)
Calibrated Accuracy:	±0.5°C/± 0.9°F (0°C to +55°C/32°F to 131°F)
Response Time:	10 minutes free air

General

Reading Rate:	1 reading every second up to 1 reading every 24 hours
Memory:	16,128 per channel
LED Functionality:	<ul style="list-style-type: none"> • Green LED blinks every 5 seconds to indicate unit is logging • Blue LED blinks every 15 seconds to indicate unit is in wireless mode • Red LED blinks every 1 second to indicate alarm condition
Wrap Around:	Yes
Start Modes:	Immediate Start
Calibration:	Digital calibration through software
Calibration Date:	Automatically recorded within device
Battery Type:	9V lithium battery included; user replaceable
Battery Life:	3 years typical at 1 minute reading rate
Data Format:	<ul style="list-style-type: none"> • For Display: °C or °F, %RH • For Software: Date and time stamped °C, K, °F, or °R, %RH, mg/mL, Dew Point - °C/K/°F/°R
Time Accuracy:	± 1 minute/month
Computer Interface:	USB to mini USB, 250,000 baud for standalone operation or RFC1000 required for wireless operation
Software:	XP SP3/Vista/Windows 7/Windows 8 (MadgeTech 4)
Operating Environment:	-20°C to +60°C (-4°F to +140°F) 0 to 95% RH non-condensing
Dimensions:	3.0" x 3.5" x 0.95" (76.2mm x 88.9mm x 24.1mm) Data logger only

Enclosure Material:	ABS Plastic
Alarm:	<p>Programmable high and low limits for temperature and humidity. Alarm is activated when temperature or humidity reaches or exceeds set limits.</p> <p>Alarm Delay: A cumulative alarm delay may be set in which the device will activate the alarm (via LED) only when the device has recorded a user specified time duration of data.</p>
Audible Alarm Functionality:	1 beep per second for reading alarm above/below threshold

Humidity

Humidity Range:	0 to 95%RH
Humidity Resolution:	0.1%RH
Humidity Calibrated Accuracy:	±3.0%RH, ±2.0 %RH typical @ 25°C (10 to 90%RH; 5 to 55°C)
Response Time:	2 minutes to 63% of change

Wireless

RF Frequency:	2.45GHz IEEE 802.15.4 ultra-low power MadgeNET wireless transceiver with fully bi-directional communication
Band:	ISM band 2.405-2.48 GHz
Maximum Output Power:	+0dBm typical
Receiver Sensitivity (RFC1000):	-95dBm typical
Range:	2000' max. outdoors (line of sight unobstructed) 500' max. indoors (typical urban)

BATTERY WARNING: May leak, flame or explode if disassembled, shorted, charged, connected together, mixed with used or other batteries, exposed to fire or high temperature. Discard used battery promptly. Keep out of reach of children.

ASK ABOUT
OUR OTHER
DATA
LOGGERS

Temperature
Humidity
Pressure
pH
Level
Shock
LCD Display
Pulse/Event/State
Current
Voltage
Wireless
Intrinsically Safe
Spectral Vibration
Motion

ORDERING INFORMATION

MODEL	DESCRIPTION
RFRHTEMP2000A	Wireless Temperature and Humidity data logger with LCD
RFC1000	Wireless RF receiver/repeater USB to mini USB adapter and power supply included
*NIST	NIST Calibration Certificate
U9VL-J	Replacement battery for RFRHTemp2000A