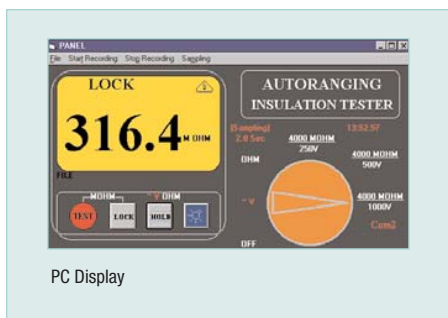


Insulation Tester + Datalogger

✓ *Autoranging insulation measurements to 4000M*
With 250/500/1000V Test Voltages and 1mA test current

Features:

- Datalogging function stores up to 16,000 readings with single store or a programmable rate of 1 to 65,000 seconds per sample
- Three test voltages of 250V, 500V, 1000V
- Measure insulation Resistance to 4000MΩ with 1KΩ resolution and 1mA test current
- Large dual 4000 count backlit LCD and fast 50 segment analog display
- Data Hold, Test Lock, Audible Continuity, Auto Sleep and Low Resistance functions
- Measure up to 600V AC
- RS-232 PC interface with Windows® 95/98/NT/2000/ME/XP compatible software
- Open circuit, overrange and low battery indications
- Complete with built-in carrying case with cover, test leads, alligator clips, RS-232 PC cable, software, neckstrap, and 8 x AA batteries



Specifications	Range	Resolution	Basic Accuracy
Insulation Resistance (Ω)	4M, 40M, 400M, 4000M	1kΩ	±(3% rdg + 5 digits)
AC Voltage	600V	0.1V	±(1.5% rdg + 3 digits)
Low Resistance	400Ω	0.1Ω	±(1% + 5 digits)
Test Voltages	250, 500, 1000V		
Display	4000 count backlit LCD with 50 segment analog bargraph		
Applicable standards	IEC1010 CAT II-1000V, CAT III-600V; VDE 0143		
Power supply	8 AA batteries		
Dimensions	7.9 x 5.5 x 3.7" (200 x 140 x 95mm)		
Weight	29oz (900g)		

Ordering Information:

380366.....Insulation Tester + Datalogger
380366-NIST380366 with Calibration Traceable to NIST

Contact:
Industrial Process Measurement, Inc.
3910 Park Avenue, Unit 7
Edison, NJ 08820
732-632-6400
support@instrumentation2000.com
<http://www.instrumentation2000.com>



<http://www.instrumentation2000.com>