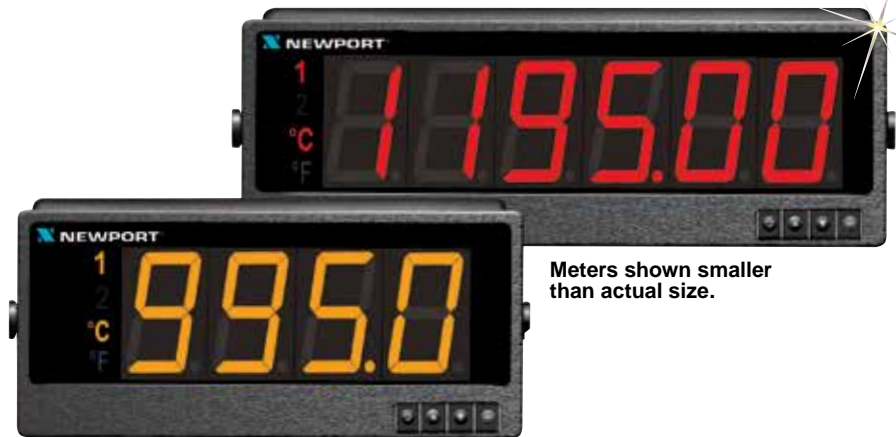


Remote BIG Display

57 and 101 mm (2.25 and 4")
Displays Available!



- ✓ **BIG Bright LEDs**
4 or 6-Digits
- ✓ **Program to Change Colors:**
RED, AMBER, GREEN
- ✓ **RS-232/RS-485 Input**
- ✓ **Ethernet Input**



Meters shown smaller than actual size.

The "Serial RS-232 BIG Remote Display" (iLD-C2) are 4 or 6 digit slave displays providing remote readout from instruments such as programmable controllers, digital panel meters and other instruments with serial output. Two communication interfaces are supported in Remote Display: RS-232 and RS-485 and can be programmed through front panel buttons.

The iLD-C2 can display data transmitted via serial communications from a computer, or from other devices which transmit ASCII data via RS-232 and RS-485. These BIG Displays are compatible with virtually all NEWPORT® devices that feature serial communications including: iSeries meters and controllers, INFINITY® digital panel meters, MICRO-INFINITY® controllers, iDRX DIN-RAIL mounted signal conditioners, and many more.

The "Ethernet BIG Remote Display" (iLD-EI) are 4 or 6-digit slave displays providing remote readout from instruments with an Ethernet output or display data from a computer.

The iLD-EI can display data transmitted via Ethernet from Newport instruments that have an Ethernet output option, (iSeries with -EI). You can tunnel or display the same data from a computer using telnet. Any two units with Ethernet option (iSeries with -EI or iServer) can talk to each other over the Ethernet LAN, WAN, and Internet using TCP/IP protocol. This allows the connected serial devices to an iServer to communicate with each other back and forth over TCP/IP networks.

Programmable Color Display

The iLD-C2 and iLD-EI feature BIG bright 7-segment LED's that can be programmed to change colors between **RED**, **AMBER**, and **GREEN** to indicate visual alarms. In the "slave" mode, the BIG remote displays can be used for displaying alphanumerical characters from a computer using serial connection (iLD-C2) or Telnet (iLD-EI). Compatible Host device must feature serial RS-232 or RS-485 output.

The BIG Display can be mounted flush in a panel or surface mounted with the included brackets. The entire BIG Display enclosure provides NEMA 4 (IP65) protection. Whether panel-mounted or surface-mounted, the BIG Display does not need to go inside a bulky and expensive NEMA enclosure.

Ethernet Input (Model EI)

Temperature Stability: 50 ppm/°C
Alarm: Alarm 1 and 2 programmable, latch/unlatch, high, low, high/low
Standards Compliance: IEEE 802.3, 10 Base-T
Supported Protocols: TCP/IP, ARP, HTTPGET

Network Interface: 10 Base-T port (RJ45 connector)

Socket Port Number: 1000, 2000
HTTP Port Number: 80

Serial Communications Input (Model C2)

Temperature Stability: 50 ppm/°C
Alarm: Alarm 1 and 2 programmable, latch/unlatch, high, low, high/low
Communication Standard: RS-232/RS-485
Transfer Speed (Baud Rate): 300, 600, 1200, 2400, 4800, 9600, 19200 bps
Data Format:
7O1-7 Bit: Odd, 1 stop bit
7E1-7 Bit: Even, 1 stop bit
8N1-8 Bit: No parity, 1 stop bit

General

Power: 100 to 240 Vac ±10%, 50/60 Hz, 22.5 W
Environmental Conditions: 0 to 40°C (32 to 104°F), 90% RH non-condensing
Protection: NEMA 4 (IP65) front bezel
Dimensions
iLD24: 289 L x 137 W x 73 mm D (11.75 x 5.375 x 2.875")
iLD26: 394 L x 137 W x 73 mm D (15.50 x 5.375 x 2.875")
iLD44: 480 L x 211 W x 95 mm D (18.11 x 8.31 x 3.76")
iLD46: 642 L x 211 W x 95 mm D (25.26 x 8.31 x 3.76")

To Order Visit newportUS.com/ild-c2 for Pricing and Details

Basic Model	Description
iLD24-C2	57 mm (2.25") 4-digit display with RS-232/RS-485 input
iLD44-C2	101 mm (4") 4-digit display RS-232/RS-485 input
LD26-C2	57 mm (2.25") 6-digit display with RS-232/RS-485 input
iLD46-C2	101 mm (4") 6-digit display with RS-232/RS-485 input
iLD24-EI	57 mm (2.25") 4-digit display with ethernet input
iLD44-EI	101 mm (4") 4-digit display with ethernet input
iLD26-EI	57 mm (2.25") 6-digit display with ethernet input
iLD46-EI	101 mm (4") 6-digit display with ethernet input

Ordering Example: iLD24-C2, large 57.2 mm (2.25") 4-digit remote display.