

## TWR TEMPERATURE SWITCH FOR LIQUIDS



Flow  
Pressure  
Level  
Temperature  
measurement  
monitoring  
control

T1



- Simple Installation
- Position Independent
- Brass or SS Construction
- Optional Signal Light
- Maximum Temperature: 248°F

Contact:  
Industrial Process Measurement, Inc.  
3910 Park Avenue, Unit 7  
Edison, NJ 08820  
732-632-6400  
support@instrumentation2000.com  
<http://www.instrumentation2000.com>

Model:  
TWR

Rev\_0311



### Special Features

- Simple Installation
- Position Independent
- Brass or SS Construction
- N/C or N/O Contact
- Optional Signal Lamp
- Maximum Temperature: 248°F

### Specifications

**Switchpoint Accuracy:** ±9-13°F (±5-7°C)

**Hysteresis:** Max. 20°C (36°F)

**Max. Temp:** 120°C (248°F)

**Max. Pressure:** 64 Bar (928 PSIG)

**Housing:** Ni-plated Brass or 1.4301 (304) SS

**Fittings:** 3/4" NPT

**Contact:**

Function: N/C or N/O

Max. Ratings: 250 VAC, 30 VDC, 4 A

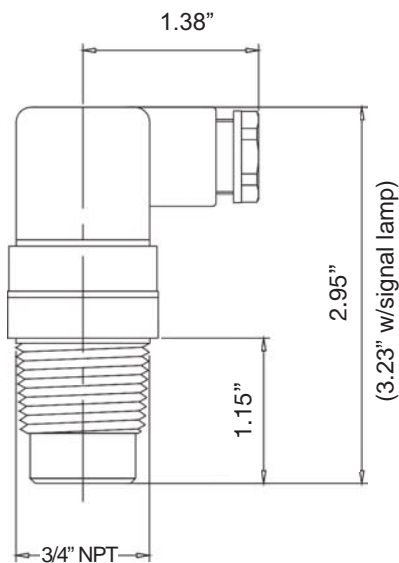
**Switch Point Options in °C (°F)**

Select when ordering (add to p/n as suffix):

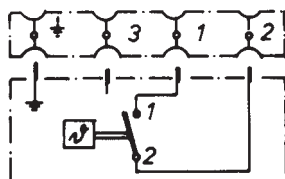
- 30 ( 86), 35 ( 95)
- 40 (104), 45 (113)
- 50 (122), 60 (140)
- 70 (158), 80 (176)
- 90 (194), 100 (212)
- 110 (230), 120 (248)

**Protection:** IP65

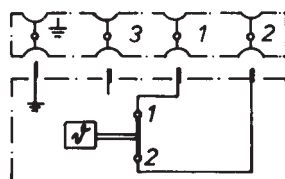
### Dimensions



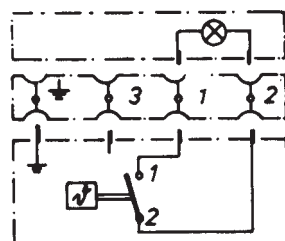
### Connection diagram



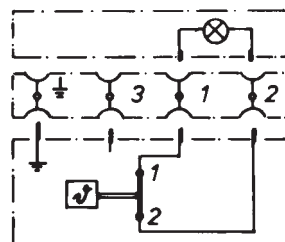
Contact N/O



Contact N/C



Contact N/O with LED/GLP



Contact N/C with LED/GLP

Kobold's TWR temperature switch is used to provide thermally triggered switching functions for liquids in pipe systems and containers. Individually it can provide temperature alarm features to, for example, insure process compliance with maximum or minimum limits. Pairs of TWR's can be chosen to provide wide hysteresis (deadband) thermostatic control function to control heating and cooling equipment.

The TWR is available in brass or stainless steel and has a 3/4" NPT fitting for direct installation into pipes or tanks.

The contact operates with a preset switchpoint. The switchpoint is factory set, but selectable in 5°C increments between 30°C and 50°C and 10°C increments between 50°C and 120°C. The contacts are available in normally open (N/O) and normally closed (N/C) configurations.

Electrical connection to the TWR is achieved via a DIN 43 650 plug. The DIN plug is optionally available with an integrated signal lamp, providing a visual indication of switch condition.

### Order Numbers

Contact	Part Number		Options Add to Part Number
	Brass	SS	
N/O	TWR-5101	TWR-5201	Signal Light
N/C	TWR-5102	TWR-5202	-LED (24 VDC) -GLP (110 VAC)